



CITY OF NAPOLEON
ENGINEERING DEPARTMENT

255 W. Riverview Avenue, PO Box 151, Napoleon, OH 43545
Phone: 419-592-4010 - Fax: 419-599-8393

Mayor

J. Andrew Small

Members of Council

Glenn A. Miller, President

Terri A. Williams

James Hershberger

Travis B. Sheaffer

John A. Helberg

Michael J. DeWit

5/14/2008

Wood County Building Inspection Department
1 Courthouse Square
Bowling Green, OH 43402

City Manager

Dr. Jon A. Bisher

RE: 1805 Scott St.
McDonald's

City Finance Director

Gregory J. Heath

To Whom It May Concern:

No zoning permit is required for the referenced property.

City Law Director

David M. Grahm

Sincerely,

City Engineer

Chad E. Lulfs, P.S., P.E.

Tom Zimmerman
Building/Zoning Inspector

**City Building &
Zoning Inspector**

Tom Zimmerman

TZ:as

cc:



REV	DATE	REVISIONS	REF.
1	2.19.01	REVISIONS PER DEVELOPER.	JG
2	3.08.01	REVISED TRASH CORRAL.	JG
3	5.10.01	REVISED PER CLIENT.	JG
4	5.21.01	REVISED PER CLIENT.	JG

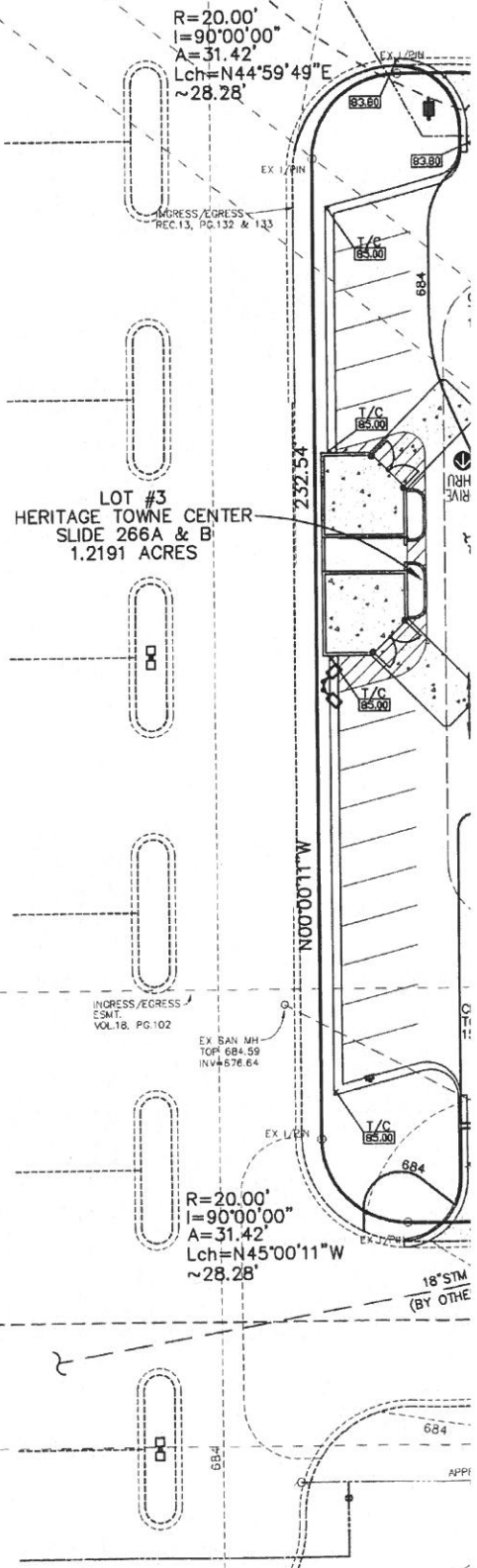
SURVEY

VAN ATTA ENG., INC - 245 W. ELMWOOD DR - CENTERVILLE, OHIO 45459 - 1.01

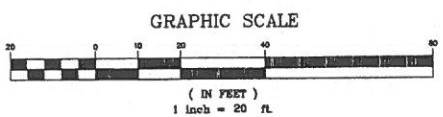
SCALE: 1" = 20'

*MSW
2/6/02*

INGRESS/EGRESS
EASEMENT
HERITAGE TOWNE CENTER
SLIDE 266A & B



- NOTES:
- 1.) STORM SEWER INSTALLATION TO BE COORDINATED WITH THE INSTALLATION OF THE 18" STORM MAIN.
 - 2.) ALL UTILITY CONNECTIONS SHALL BE COORDINATED WITH CONSTRUCTION OF HERITAGE TOWNE CENTER.
 - 3.) CONTRACTOR TO VERIFY LOCATION OF EXISTING SANITARY PRIOR TO MAKING CONNECTION.



G:\PI\NAPOLEON\MCDONALDS\NAPOLEON\MCDONALDS.DWG, MAY 25, 2001 - 13:16:03

SACCO PRODUCTS • NEW HOPE, MINNESOTA
REORDER BY PART NUMBER 6832
APPROXIMATE SCALE OF SHEET BY THIS LINE

SACCO PRODUCTS • NEW HOPE, MINNESOTA
REORDER BY PART NUMBER 6832
APPROXIMATE SCALE OF SHEET BY THIS LINE

SACCO PRODUCTS • NEW HOPE, MINNESOTA
REORDER BY PART NUMBER 6832
APPROXIMATE SCALE OF SHEET BY THIS LINE

SACCO PRODUCTS • NEW HOPE, MINNESOTA
REORDER BY PART NUMBER 6832
APPROXIMATE SCALE OF SHEET BY THIS LINE